



25TH ANNIVERSARY

2025/26 PERFORMING ARTS SEASON

On Stage

PREMIER EDITION 2025



DEFYING GRAVITY



AMY BRUNI



I AM, HE SAID



ABBAMANIA

West Bend Insurance Company
is proud to support the
Schauer Arts and Activities Center
and showcase the arts in
our communities.



1900 S. 18th Avenue | West Bend, WI 53095 | thesilverlining.com



25TH ANNIVERSARY

2025/26 PERFORMING ARTS SEASON


MAIN STAGE
SERIES

FAMILY
SERIES

SPECIAL
EVENT

COMEDY
ZONE

FRI-SAT, AUGUST 22-23	TREASURE ISLAND: MISSOULA CHILDREN'S THEATER
FRI, SEPTEMBER 26	DEFYING GRAVITY: THE BROADWAY/HOLLYWOOD SONGBOOK
FRI, OCTOBER 10	AMY BRUNI: WALKING WITH GHOSTS
THU, OCTOBER 16	I AM, HE SAID: A CELEBRATION OF THE MUSIC OF NEIL DIAMOND
SUN, OCTOBER 19	ABBAMANIA: A TRIBUTE TO ABBA
SAT, OCTOBER 25	DISENCHANTED! THE HIT MUSICAL COMEDY
SUN, NOVEMBER 2	U.S. NAVY BAND COMMODORES
FRI, NOVEMBER 7	COMEDY ZONE: JOHN HEFFRON
FRI, NOVEMBER 21	BILL BLAGG FAMILY MAGIC
SAT, NOVEMBER 22	AN EVENING WITH KATHY MATTEA
FRI, DECEMBER 7	COMEDY ZONE: ANDY BENINGO
SAT, DECEMBER 6	LAND OF SWEETS & IRISH PERFORMANCE TROUPE
MON, DECEMBER 8	CELTIC ANGELS CHRISTMAS
THU, DECEMBER 11	JUMP: AMERICA'S VAN HALEN EXPERIENCE
SAT, DECEMBER 13	WHO BROUGHT THE HUMBUG?
THU, DECEMBER 18	CHERISH THE LADIES: CELTIC CHRISTMAS
SUN, DECEMBER 21	A CARPENTERS' CHRISTMAS
FRI-SUN, JANUARY 23-25	FINDING NEMO JR.: PRESENTED BY SCHAUER RISING STARS PRODUCTIONS
FRI-SUN, JANUARY 30-FEBRUARY 1	I LOVE YOU, YOU'RE PERFECT, NOW CHANGE
THU, FEBRUARY 5	THE LOVIN' SPOONFUL
FRI, FEBRUARY 6	ARE YOU READY FOR IT? A TAYLOR EXPERIENCE
SAT, FEBRUARY 7	LETTERS FROM HOME
SAT, FEBRUARY 14	THE KING'S SINGERS
FRI, FEBRUARY 20	BUCKETS N BOARDS: COMEDY PERCUSSION SHOW
SAT, FEBRUARY 21	BRITBEAT: THE IMMERSIVE BEATLES TRIBUTE EXPERIENCE
SUN, FEBRUARY 22	DINO-LIGHT: A GLOW IN THE DARK EXPERIENCE
THU, FEBRUARY 26	THE BARRICADE BOYS BROADWAY PARTY
THU, MARCH 5	COMEDY ZONE: GREG MORTON
FRI-SAT MARCH 6-7	THE JUNGLE BOOK: MISSOULA CHILDREN'S THEATRE
SUN, MARCH 15	LADYSMITH BLACK MAMBAZO
THU, MARCH 19	THE 3 REDNECK TENORS
SAT, MARCH 21	ONE NIGHT IN MEMPHIS
THU, MARCH 26	DON'T STOP ME NOW: A CELEBRATION OF ROCK MUSICALS
FRI, MARCH 27	CELLOVOCI
SAT, APRIL 4	HEARTACHE TONIGHT: A TRIBUTE TO THE EAGLES
THU, APRIL 9	COMEDY ZONE: TAMMY PESCATELLI
FRI, APRIL 17	AN EVENING WITH C.S. LEWIS: STARRING GREGORY WILLIAMS WELSCH
SAT, APRIL 18	THE GREAT DUBOIS: MASTERS OF VARIETY
THU, APRIL 30	THE GLENN MILLER ORCHESTRA
FRI, MAY 1	THE ELECTRIC LIGHT ORCHESTRA EXPERIENCE FEATURING EVIL WOMAN



Thank you to our
Veterans and Active
Military for giving
us the freedom to
live the life God has
so graciously given us.

We will be forever
indebted to you and
your family for all
the sacrifices you
have made to protect
the United States
of America.

God bless you and
your family,

John & Nancy Lee
FAMILY



WASHINGTON COUNTY DAILY NEWS

A Trusted News Source Since 1855

gmtoday.com

GREATER MILWAUKEE'S
TRUSTED NEWS SOURCE

Wisconsin Automotive Museum

Showcasing Transportation History

- Open Wednesday - Saturday;
10 AM - 5 PM
- 125+ cars and trucks exhibited,
featuring Kissel, Nash, and 35+
other marques
- Additional displays include gas
pumps, vintage signs, and an exhibit
on Wisconsin roadways
- Over an acre of exhibit space



www.wisconsinautomuseum.com
147 North Rural Street Hartford, WI 262-673-7999



AN ENCORE IN EVERY POUR.



120 North Main Street

RS Semler INSURANCE

Affiliate of Robertson Ryan Insurance

Insurance with a Personal Touch

R.S. Semler Insurance, an affiliate of Robertson Ryan, is proud to support our community while serving as your local advisor for protection and peace of mind.

262-673-3160 | www.robertsonryan.com



WINNING CASES AND FRIENDS FOR 150 YEARS.



**DAHLBERG
O'MEARA**

LAW GROUP

Schnorenberg's Floor Covering has been offering Hartford and surrounding areas family-to-family flooring solutions since 1954



Schnorenberg's

Floor Covering, Inc.

**Carpet - Laminate - Luxury Vinyl - Wood
Window Treatments - Area Rugs**

Free Estimates | Expert Installation

15 Mill Street, Hartford, WI

262-673-4020 | www.schnorenbergsfloor.com | Find us on

Mon, Wed & Thur 9am - 7pm | Tues & Fri 9am - 5pm | Sat 9am - 3pm

**Hartford
Rotary Club**
Hartford, Wisconsin



*Are you a individual who
wants to make a positive
change in your community
and the world?*

As a part of Rotary International, our club is committed to promoting peace, fighting disease, providing clean water and sanitation, supporting education, and growing local economies. We work together to achieve these goals through fundraising events, volunteer projects, and partnerships with local organizations. **Want to learn more?** Visit hartfordrotary-wi.org.

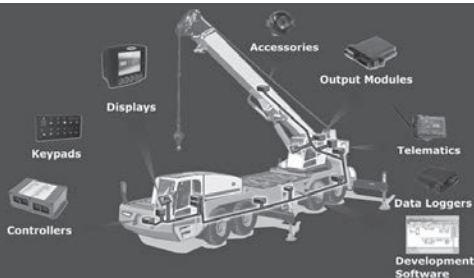
local expertise **you can trust**



Penny Zagel
262-673-7975
304 N Main St
Hartford

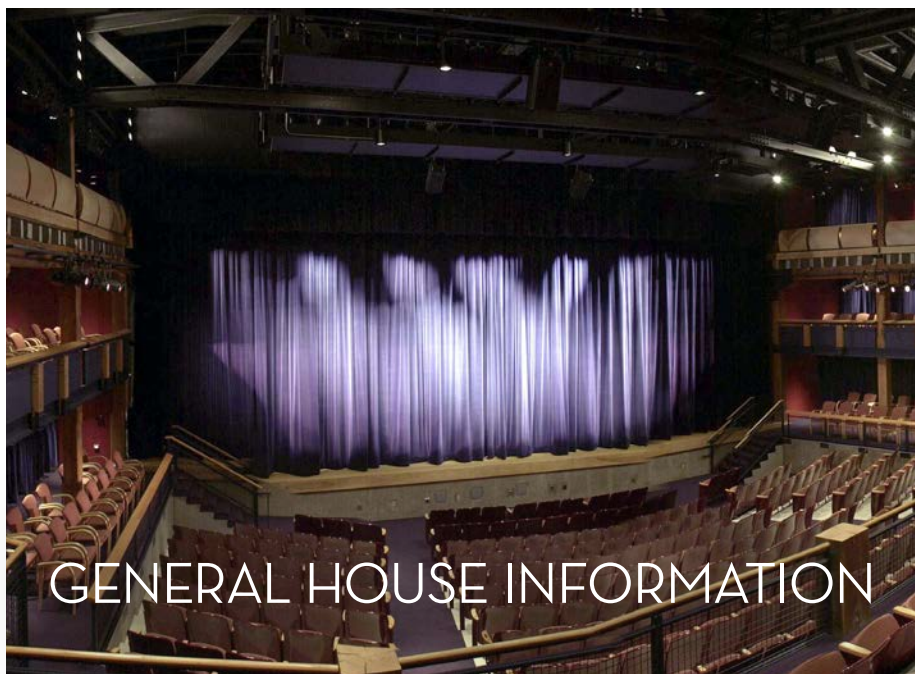


Savings vary. In most states, prices vary based on how you buy. Subject to terms, conditions and availability. Allstate Fire and Casualty Ins. Co & affiliates: 3100 Sanders Rd Northbrook IL 60062. © 2023 Allstate Insurance Co. MKT00508-1



Intelligent Vehicle Controls





GENERAL HOUSE INFORMATION

Doors

Doors to the Ruth A. Knoll Theater open 30 minutes prior to most events. The Schauer Arts Center's main entrance opens one hour prior to showtime.

Restrooms

Restrooms are located on the west side of both lobby levels.

Elevator

Elevator access is at the southeast corner of both lobby levels.

Wheelchair/Limited Mobility Access

Wheelchair and limited mobility access are located on both levels of the theater. Please notify the Box Office of any special needs when purchasing tickets.

Sound Enhancement

Sound enhancement is offered through hearing-assisted listening devices that amplify performances. Devices are available at no charge for most events, upon request through the Box Office. A photo ID is required.

Beverages

Beverages are available for purchase in the upper and/or lower bar before the event and during intermission. Beverages are allowed into the theater with the purchase of a Schauer cup only.

Tobacco Use

Smoking or vaping tobacco products are not permitted inside the Schauer Arts Center, or within 25 feet of entrances.

Electronic Devices

Cell phones, tablets, and electronic devices should be silenced prior to the performance.

Photography

Photography is designated by each performer. The Schauer Arts Center reserves the right to use patrons' image or likeness in connection with any broadcast or recording of the event.

Ticket Donations

Ticket donations are accepted for resale through the Box Office for upcoming 'Schauer Center Presents' events. Tickets must be returned at least 48 hours in advance of an event to be considered a tax-deductible donation; receipt provided upon request. All tickets are non-refundable.

Lost Items

Lost items may be reclaimed Monday through Friday, 12:00 pm to 5:00 pm or one hour prior to show times.



SCHAUER
ARTS CENTER

25TH ANNIVERSARY
2025|26 PERFORMING ARTS SEASON

**DEFYING GRAVITY:
THE BROADWAY/HOLLYWOOD SONGBOOK**

FRIDAY, SEPTEMBER 26 | 7:00 PM



MAIN STAGE
SERIES SPONSOR

Defying Gravity
BLOCKBUSTER BROADWAY

**PERFORMANCE RUNS APPROXIMATELY 90 MINUTES
20 MINUTE INTERMISSION**

Please respect the wishes of the performer regarding photography or recording, as directed in pre-show announcements. We ask you to please silence all cell phones and mobile electronic devices before the performance.



SHOW SPONSOR

DEFYING GRAVITY: THE BROADWAY/HOLLYWOOD SONGBOOK



Kelli Rabke (Vocalist)

Kelli Rabke was handpicked by Andrew Lloyd Webber to make her Broadway debut as the Narrator in the revival of *Joseph and the Amazing Technicolor Dreamcoat* (U.S. Cast Recording). Last summer, she reprised that role to much acclaim at La Mirada Theatre for the Performing Arts. She played Eponine in *Les Misérables* on Broadway and has performed in regional theaters throughout the country, most notably as “Yonah” in the American Premiere of Stephen Schwartz’s *Children of Eden* (American Premiere Recording) at the Paper Mill Playhouse, where she also got her “big break” as Dorothy in their landmark production of *The Wizard of Oz*.

Other favorites include Mabel in *Mack & Mabel* at Barrington Stage Co, and Christine in *Phantom* (Kopit/Yeston) at Pittsburgh CLO. Recent highlights include the Emmy nominated PBS American Songbook segment *Stephen Schwartz and Friends*, featuring the composer himself at the piano, and featured soloist on the GRAMMY nominated album, *Sondheim Unplugged*. After leaving the bright lights of the stage to start a family, she is now a staple in the concert world, performing with symphony orchestras across the country and creating her own cabaret shows, including the critically acclaimed *Tiny Giants—Petite Powerhouses from Garland to Gaga*. She is most proud of her biggest “productions” to date: son Joseph and daughter Abigale! www.kellirabke.com



Campbell Walker Fields (Vocalist)

Campbell Walker Fields is versatile singer and keyboardist with equal comfort on concert, musical theatre and arena stages. His professional career began when cast at the age of nine as Artful Dodger in Lyric Theatre of Oklahoma’s 2011 production of *Oliver!*. Soon after he played JoJo in *Seussical the Musical* at the University of Oklahoma, and Foo (Lost Boy) in the seven week run of the world-premiere Dallas Theatre Center production of the musical *FLY*. Other Lyric credits include the role of Slim in *Oklahoma!*, and productions of *Mary Poppins*, *Big Fish* and *Les Misérables*. Favorite student roles have included Tom Collins in *RENT*, Joseph in *Joseph and the Amazing Technicolor Dreamcoat*, Seaweed in *HAIRSPRAY*, Jack in *Into The Woods* and Rum Tug Tugger in *CATS*.

In the summer of 2016 he was seen competing on Season 11 of NBC’s *America’s Got Talent*, making it to the middle judge cuts round, and attended GRAMMY Camp Nashville, a music industry program for high school students interested in the music business. He has performed as soloist with symphony orchestras including Abilene Philharmonic, The Signature Symphony and the OKC Philharmonic where he was featured artist in *The Christmas Show* and its Independence Day concerts *Red White & Boom* and he has performed at Cast Party/Birdland in NYC. Commercial work includes the feature film *Home Run* and TV and print commercials for SandRidge Energy, and he is regularly invited to perform at special events and galas. Since 2018 Campbell has been part of the all-star faculty for the Pocono Mountains Performing Arts Camp where he both teaches and shares the stage with a rotating cast of Broadway luminaries including Ilisa Howard, Klea Blackhurst, Nellie McKay, Kelli Rabke, and Savion Glover.

Campbell is a graduate of Classen School for Advanced Studies in Oklahoma City and Oklahoma University. He’s a National Anthem favorite with Thunder audiences.



Scott Coulter (Vocalist)

Scott Coulter is one of New York's most honored vocalists having received five MAC Awards (Manhattan Association of Cabarets & Clubs), five Bistro Awards, and two Nightlife Awards for Outstanding Vocalist. He's performed at most of NYC's top rooms including Birdland, 54 Below, The Oak Room at the Algonquin, and Feinstein's at The Regency where he spent a record-setting eight months performing the revue *11 O'Clock Numbers At 11 O'Clock* which he also co-created, directed and musically arranged. His self-titled debut CD won the 2003 MAC Award for Outstanding Recording and was chosen as the best recording of the year by TheatreMania and Cabaret Scenes magazines. Scott was director and star of *A Christmas Carol: The Symphonic Concert* in its world premiere with the Baltimore Symphony and reprised his performance in the Emmy-nominated PBS production. He is an Emmy nominee himself for his performance in *American Song* at NJPAC and a GRAMMY nominee as a featured vocalist on the album *Sondheim Unplugged*.

The NYC Sessions. Scott regularly performs in concert both as a solo artist and with a variety of legendary performers including Sheena Easton and Academy Award-winning composer Stephen Schwartz. Schwartz has said "One of the greatest things that can happen to a composer is to have his music interpreted by Scott Coulter."



Scott is creator, arranger and director of over forty touring shows (symphonic and non-) including *Music of the Knights*, *The Wonderful Music of Oz*, *Blockbuster Broadway!*, and, for The ASCAP Foundation, *Jerry Herman: The Broadway Legacy Concert*. As a director his credits include many shows for The Town Hall in NYC and *Broadway by the Year* for The Berkshire Theatre Festival and *Broadway by the Bay*. Along with Michael Kerker and ASCAP, he's a regular producer/director of Michael Feinstein's *Standard Time* at Carnegie Hall. Scott, along with Dave Gaebler, is a co-producer of the Jessica Hendsy/Brianna Barnes musical *Walking With Bubbles* which received a 2023 Drama Desk Award nomination and won an Off-Broadway Alliance Award. The show's cast album is produced by Coulter and Vibecke Dahle Dellapolla. Coulter and Gaebler are also on the producing teams (Broadway and tour) for *SUFFS* (Tony Awards for Book & Score) and *Water For Elephants*.

Scott is founder/owner of Spot-On Entertainment and Spot-On Arts Academy and is a resident director of programming at 54 Below (Broadway's Supper Club) in NYC. For almost a decade he was the artistic

director of the Pocono Mountains Music Festival and is the founder of the Pocono Pops! Scott is a proud graduate of the Cincinnati College-Conservatory of Music which honored him with the CCM Young Alumni Award in 2010 and CCM's Distinguished Service Award in 2020.



John Boswell (Pianist)

John Boswell has served as musical director for Judy Collins, Andy Williams, Bob Newhart, Scott Coulter, Maude Maggart, Faith Prince, Carmen Cusack, Babbie Green, Jason Graae and a host of other fine talents. Boswell played the role of "Moose" in the national tour of *Crazy for You* and has appeared on *The Tonight Show*, *Today Show*, *CBS This Morning*, *Regis and Kathie Lee*, *General Hospital* and was the piano playing hands of Nancy McKeon on the sitcom *The Facts of Life*. Recent concerts with symphonies have included *Jerry Herman: The Broadway Legacy Concert*, *Blockbuster Broadway!*, *Sheena Easton and Scott Coulter: The Spy Who Loved Me* and *Music of The Knights*.



Spot-On Entertainment

Scott Coulter's Spot-On Entertainment is a concert production/booking company based in New York City. Owner and founder Scott Coulter is a multi-award winning performer, director, musical arranger, and producer whose creations for theaters, performing arts centers and symphonies include *Music of the Knights*, *Bette Babs & Beyond*, *The Wonderful Music of OZ*, *You've Got a Friend*, and *Blockbuster Broadway!* Special composer tribute shows include *Defying Gravity: Stephen Schwartz & Friends* and *Jerry Herman: The Broadway Legacy Concert* (which is co-produced by Spot-On and The ASCAP Foundation). Spot-On concerts often feature an education component that result in local artists appearing on stage with members of the Spot-On family. It is our goal to inspire and pass the torch to the next generation.





SCHAUER
ARTS CENTER

25TH ANNIVERSARY
2025|26 PERFORMING ARTS SEASON

AMY BRUNI: WALKING WITH GHOSTS

FRIDAY, OCTOBER 10 | 7:00 PM

forte | MAIN STAGE
bank | SERIES SPONSOR



PERFORMANCE RUNS APPROXIMATELY 90 MINUTES
20 MINUTE INTERMISSION

Please respect the wishes of the performer regarding photography or recording, as directed in pre-show announcements. We ask you to please silence all cell phones and mobile electronic devices before the performance.



MEDIA SPONSOR

**AMY BRUNI: PARANORMAL INVESTIGATOR &
HISTORICAL RESEARCHER. AUTHOR. PODCASTER.
TV PRODUCER & HOST.**



Amy Bruni, co-star and executive producer of the hit paranormal series *Kindred Spirits*, calls upon over 20 years of investigation experience to help people reclaim their homes and lives from the mysteries of the unknown. Amy's passion for helping others comes together with her love for paranormal exploration as she rejoins her partner in crime, Adam Berry, and forms a paranormal powerhouse aimed at helping families in crisis find answers from the world beyond the veil.

Prior to *Kindred Spirits*, Amy was a star of SYFY's popular paranormal program, *Ghost Hunters*. Joining the cast in 2008, Amy traveled the country

exploring the most haunted locations in America while working as the team's historical researcher to give identity to the long forgotten spirits they encountered during their travels. After seven exciting years with the show, Amy exited to focus on her growing family and start her own paranormal travel company, *Strange Escapes*.

Her love of travel mixed with her passion for the unknown flourished as she now invites lovers of travel and mystery to try their hand at investigating some of the country's most infamous haunts, including the Mt Washington Hotel, The Queen Mary, and The Stanley Hotel.

Even with her return to television with *Kindred Spirits*, Amy loves to stay busy and active within the paranormal community, continually finding new and exciting haunts for her travel business. She invites those looking to experience the bizarre and unknown to join her and other paranormal celebrity guests at her *Strange Escapes* throughout the year.

In the rare instances that Amy finds a bit of free time from investigating or running her travel business, she enjoys scouring antique stores for spiritualist memorabilia, hitting the beach, and drinking wine. Though she stays busy, she'll never say no to a good ghost hunt—or chardonnay.



SCHAUER
ARTS CENTER

25TH ANNIVERSARY
2025|26 PERFORMING ARTS SEASON

**I AM, HE SAID: A CELEBRATION
OF THE MUSIC OF NEIL DIAMOND**

THURSDAY, OCTOBER 16 | 7:00 PM

forte | MAIN STAGE
bank | SERIES SPONSOR

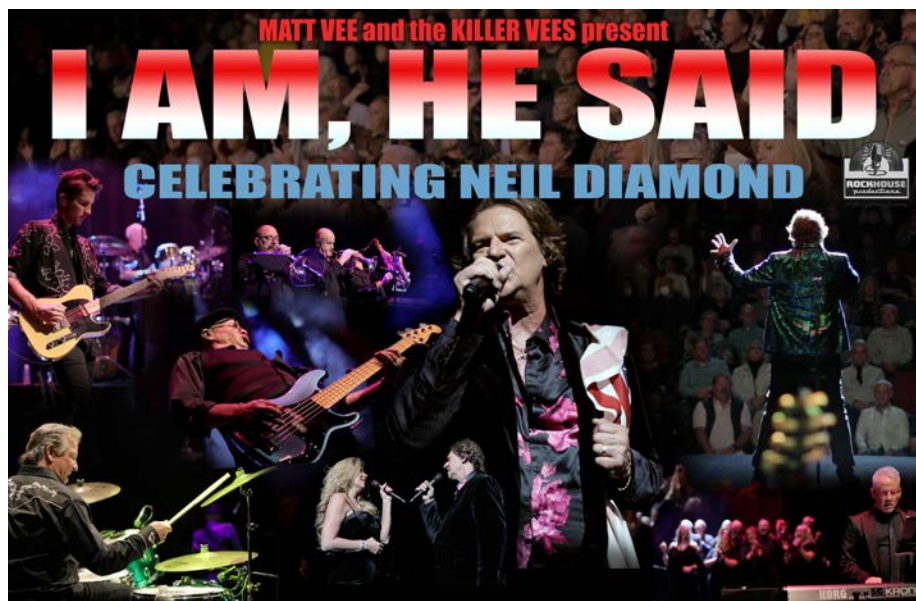


**PERFORMANCE RUNS APPROXIMATELY 90 MINUTES
20 MINUTE INTERMISSION**

Please respect the wishes of the performer regarding photography or recording, as directed in pre-show announcements. We ask you to please silence all cell phones and mobile electronic devices before the performance.



SHOW SPONSOR



"We are saying what he said," laughs Matt Vee referring to the one and only Neil Diamond. Matt along with cousins Jeff and Tommy Vee, local music scene veterans and sons of the legendary Bobby Vee, join forces with their family and friends as The Killer Vees to celebrate the music from a timeless catalog. With songs like "Cracklin' Rosie," "America," and "Sweet Caroline," Neil Diamond sold over 100 million records worldwide with music that became the soundtrack to one generation after another with hits spanning five decades. As a Tin Pan Alley song writer in the mid '60s, he penned songs recorded by everyone from Elvis Presley to Deep Purple and, of course, the Monkee's classic, "I'm A Believer."

"This is not a tribute show," says Tommy Vee. "This is a celebration of an amazing musical icon, one we all love and respect. We have been fans since we were in grade school and first learning our respective instruments and played many of these tunes over the years in various bands. We have recruited an incredible group of singers and players and have gone back to the original records," he explains, "it is all about the vocals and Matt nails it. It's a rockin' show!"

Joining The Killer Vees will be Matt's wife Julie Velline on vocals and Tommy Vee's son Bennett Vee on lead guitar along the incomparable Chris Bloniarz on keyboards, Dennis Kennedy on percussion and Richard Manik on saxophone, flute, keyboards and vocals, as well as a very special surprise featuring local talent for the finale.

Members Of The Killer Vees have recorded or performed with: Bobby Vee, Sir Paul McCartney, Sir Tim Rice, Ronnie Wood, Mick Taylor, Eric Clapton, Brian Setzer, Chase Bryant, Little Richard, Jerry Lee Lewis, Chuck Berry, Frankie Avalon, Fabian, The Shirelles, The Chiffons, Bill Medley, Chris Montez, Brian Hyland, Johnny Tillotson, Matthew & Gunnar Nelson, Peter Noone, Quinn Sullivan, Rosie Flores, Jonah Marias, The Johnny Holm Band, and many others.

COMPLETE SONG LIST:

Cherry, Cherry

Song Sung Blue

Hello Again

Desiree

You Got To Me

Forever In Blue Jeans

Kentucky Woman

Play Me

Shilo

Solitary Man

Girl, You'll Be A Woman Soon

If You Know What I Mean

Cracklin' Rosie

I Am...I Said

Soolaimon

Holly Holy

Brother Love

America

Thank The Lord For The Nighttime

You Dont' Bring Me Flowers

Love On The Rocks

Sweet Caroline

I'm A Believer

Crunchy Granola Suite



“I AM...HE SAID”

A CELEBRATION OF THE MUSIC OF NEIL DIAMOND

Known in the music business as the “rhythm section to the stars,” Jeff and Tommy Vee have been playing drums and doghouse bass respectively for almost forty years with a resume far too long to list. They have performed, recorded and/or toured with a virtual who’s who of Rock And Roll Royalty including Little Richard, Jerry Lee Lewis, Paul McCartney, Ronnie Wood, Brian Setzer, Chuck Berry, Bill Medley, Sam Moore, Peter Noone, Fabian, Frankie Avalon, The Shirelles, The Chiffons, Nelson, and of course their father Bobby Vee...just to name a few.

In 2008 Jeff & Tommy joined forces with their cousin Matt Vee and his talented wife Julie Velline to form “The Killer Vees.” Matt, an accomplished performer in his own right also toured nationally and internationally with Bobby Vee and others from the ‘50s & ‘60s era as well as thirteen years as guitarist and vocalist for Midwest favorite Johnny Holm. Matt is also a frequent guest performer with “The Fabulous Armadillos.” Together they have produced hit regional touring shows such as, *I Am He Said—A Celebration Of The Music Of Neil Diamond*, *Remembering Bobby Vee* and, *The Killer Vees Killer Country—A Celebration of the Golden Age of Country Music*.

The Vees grew up on the road and in the business and have spent the better part of the last forty years wowing audiences across the world! In addition, they continue to tour nationally as the backing band for the critically acclaimed show *The Original Stars of American Bandstand* featuring Fabian, The Shirelles, Brian Hyland, Chris Montez, The Chiffons, and Merrilee Rush.

We are very proud to announce that Tommy’s 20 year old son Bennett Vee will be joining the Killer Vees playing lead guitar. Bennett is the grandson of the late Bobby Vee and the third generation of the Vee family to take the stage! He is currently the touring drummer for international blues phenom Quinn Sullivan and Minnesota turned Nashville/Austin, TX country artist Anderson Daniels when he is not playing lead guitar with his family!

The Killer Vee’s band is rounded out by George Maurer on keys, Richard Manik on sax and Tommy’s brother in law Dennis Kennedy on percussion and harmonica.

Cast & Crew

Matt Vee	Lead Vocals & Guitar
Jeff Vee	Drums
Tommy Vee.....	Bass & Vocals
Bennett Vee.....	Guitar & Vocals
Julie Velline	Lead & Backing Vocals
Dennis Kennedy	Percussion
Chris Bloniarz	Keyboards
Richard Manik	Saxophones, Flute, Keyboards
Mike Borell	Production Manager/Sound
Thomas Cabot	Stage Manager/Monitors





SCHAUER
ARTS CENTER

25TH ANNIVERSARY
2025|26 PERFORMING ARTS SEASON

ABBAMANIA: A TRIBUTE TO ABBA

SUNDAY, OCTOBER 19 | 7:00 PM

forte | MAIN STAGE
bank | SERIES SPONSOR



**PERFORMANCE RUNS APPROXIMATELY 90 MINUTES
20 MINUTE INTERMISSION**

Please respect the wishes of the performer regarding photography or recording, as directed in pre-show announcements. We ask you to please silence all cell phones and mobile electronic devices before the performance.



SHOW SPONSOR

ABBAMANIA



ABBAMANIA the concert has been quoted as the #1 ABBA musical production in the world with stops in Malaysia, South America, The Dominican Republic, Jakarta, Grand Cayman Islands, and the United States. ABBAMANIA was one of the only shows to be invited to perform at the Royal Alexander Theatre in Toronto, where Mama Mia set the stage.

ABBAMANIA is a twelve-piece group complete with background vocals. They are accompanied by members of the London Ontario Symphony Orchestra that travel with the show.

Their authentic costumes, vocal collaboration and stage performance exude an extraordinary re-creation of the magic and excitement of ABBA.

Hubert O'Hearn of the Chonicle Journal recently wrote in a letter addressed to Bjorn and Benny, entitled Memo to the Rock Star, "Best yet! All you and Benny have to do is

write the songs. You don't even have to get together with your ex-wives and record with them or tour with them. All I ask is for five new ABBA songs and send them directly to a band called ABBAMANIA. Let them play them for you to hear. They are that good. In fact, I'm willing to wager my salary for the review that you'll be impressed and allow the ABBA torch to be passed to a new generation of the band from Toronto!"

John Stevens

John Stevens is a Canadian musician and has been with ABBAMANIA for eighteen years, touring all over the world, from Malaysia to Montreal, Canada performing over 200 concerts a year. He started out writing original music and recording for a Canadian band called Romance at Eleven. After having Canadian success in the '90s, he was then hired for the lead role in and as musical director for the world famous ABBAMANIA. It is his job to arrange every ABBA song, note for note, exactly as the original recordings. This helped make ABBAMANIA the most authentic ABBA production performing today. John brings a high level of perfection and stage presence to the show. John has the lead role and plays the part of Bjorn.

Monica Tietz

Monica Tietz has been a professional singer for over nineteen years and hails from Penetang, Ontario, Canada. Monica also is a excellent drummer and played drums and sang for a popular group called Bounty. She was also the lead in a production called Jagged Little Pill, and the theatre show called "The Spice Girls", a musical tribute to the Spice Girls. She also does studio session work for radio commercials and for the past six years has been the lead in the production of ABBAMANIA. Monica, with her strong vocals, plays the part of Anni-Frid in ABBAMANIA.

Mathew Whale

Mathew is from Hanover, Ontario, Canada. Mathew studied music at the Toronto Conservatory for five years. He has been a professional piano and keyboardist for over twenty years. Mathew has been performed in the musical productions to Billy Joel, Fleetwood Mac, Elton John and Pink Floyd. He does a lot of studio session work and is rated as one of the best piano players in Canada. The keys are a big part of the ABBA sound. Mathew plays Benny in ABBAMANIA.

Angela Seeger

Angela Seeger performs and continues to do so all over the world. She has performed in Atlantic City for over seven years performing as Janice Joplin and as well, Las Vegas, Europe, Africa, and Asia to performing on cruise Lines throughout the world. Angela Seeger brings her many musical personalities to stage with jaw dropping precision.

With a fan base that continues to grow rapidly, Angela Seeger is always reinventing herself to bring bigger and better to the stage. She is also the back up vocalist for the recording group Heart. Do not miss per incredible performance of Adele. Angela performs as Agnetha in ABBAMANIA.

ABBA-MANIA PROGRAM

INTRO

MAMMA MIA

TAKE A CHANCE

DOES YOUR MOTHER KNOW?

I HAD A DREAM

WATERLOO

SOS

I DO, I DO, I DO, I DO, I DO

NAME OF THE GAME

THE WINNER TAKES IT ALL

GIMME! GIMME! GIMME! (A MAN AFTER MIDNIGHT)

INTERMISSION

CHIQUITITA

SUPER TROOPER

SUMMER NIGHT CITY

MONEY, MONEY, MONEY

LAY ALL YOUR LOVE ON ME

EAGLE

RING RING

HONEY HONEY

KNOWING ME, KNOWING YOU

FERNANDO

VOULEZ-VOUS

DANCING QUEEN

C E L E B R A T I N G

50
Y E A R S
1974 - 2024

DOUGLAS JEWELER
THIRTY NORTH MAIN STREET
HARTFORD WISCONSIN



Staffing Support Specialists

We're here to help you!
Connecting Employers and Employees

120 N. Main Street • Suite 204 • Hartford, WI 53027
262.673.0698 • staffing-support.com

bank **five nine**

Proud Supporter of the

Schauer Arts Center



Serving Southeast WI since 1859.

bankfivenine.com/hartford



MEMBER FDIC

Play is The True Work of a Child!



Mantz Imagination, LLC
Presents



The Children's Play Gallery

262-354-0819

thechildrensplaygallery.com

The Gallery is filled with interactive exhibits for children to encourage learning through hands-on, creative and interactive play. Exhibits include a pirate ship, construction area, stage, market place, arts & crafts, science area, rotating exhibits and more.

Let your adventure begin when you visit The Children's Play Gallery!

Please visit our website thechildrensplaygallery.com for current hours and admission rates.

* Location *

126 E. Wisconsin Ave.
Oconomowoc, WI 53066

* Hours *

Please check website
for hours and to make
a reservation.



Like Us On
Facebook!
[/childrensplaygallery](https://www.facebook.com/childrensplaygallery)



One Venue, **UNLIMITED POSSIBILITIES**

Filled with culture & history, the Schauer Arts Center was transformed from a 1919 canning factory into an architectural award-winning arts center. Soaring loft ceilings and rustic exposed beams showcase a blend of industrial charm and elegance. Our unique variety of spaces can accommodate up to 225 guests.

Call 262-670-0560 x215 or e-mail
Events@SchauerCenter.org to schedule a tour today!



*Enjoy
the show!*

wtkmnews.com



The Schauer Arts Center is proud to offer residencies to some of the area's premiere performance and artist groups. For more about upcoming performances and events from these groups, visit the 2025-26 Guest Events page at schauercenter.org.






HARTFORD PARKS & RECREATION

THE BENEFITS ARE ENDLESS,
AND WE CAN PROVE IT.

The **Hartford Parks and Recreation Department** is dedicated to providing our community with quality recreation programs, facilities, and services. Our parks and open spaces beautify the community, providing places to relax, play, and enjoy the outdoors. The Community Recreation Center features the **Hartford Family Aquatic Center sponsored by the Lutz Family Foundation** and also has a comprehensive fitness facility including **free weight** and **cardio equipment** workout areas. Joining the Recreation Center as a member is affordable. In addition to swimming and fitness facilities, activities are offered in pre-school education, youth/adult athletics, self improvement enrichment classes and arts & crafts. Keep informed of all our services—pick up a copy of our seasonal activity guide or go online for a copy at ci.hartford.wi.us. We hope to see you soon!



PARKS AND RECREATION OFFICE in the Rec Center
125 North Rural Street • (262) 670-3730

Find us on 



PROUD SPONSOR OF THE
SCHAUER ARTS CENTER



THANK YOU FRIENDS OF THE SCHAUER

The Friends of the Schauer Center are a community of supporters who have a passion for the performing arts and are dedicated to helping us develop, support and promote the arts in our community. Becoming a Friend of the Schauer provides you with extra convenience and savings as you support this beautiful center and the programs it provides. Friends memberships start at just \$50 annually!

To become a Friend of the Schauer Center or to learn more, contact Dani Kuepper at Dani@SchauerCenter.org or call 262-670-0560 x218.

LEADER \$5,000+

Frederick W. & Beatrice K.
Schauer Foundation
Greater Milwaukee Foundation—
Kenneth & Janet Pike Family Fund
Hartford Community Service, Inc.
Katherine Hauser
Kurt & Maureen Konkell
Ruth A. Knoll Legacy Fund
Shirley M. Peters Living Trust
West Bend Community Foundation's
West Bend Mutual Insurance Company's
Charitable Fund

BENEFACTOR \$2,500+

Glenn Casetta
Green Bay Packers Foundation
Dorothy Park

SUSTAINER \$1,000+

Ann L. Becker
Paul & Patty Butenhoff
Douglas Jeweler
Gerald Falkenstein
Dick & Linda Feutz
Marilee Fuss
Martha & Ron Gritt
Mark & Linda Hauser
Ralph & Carol Kuepper
June Krueger
Patricia Leach
Dr. Michael & Kay Mally
Scott & Julie Moore
Gary Morgenstern
Tim & Shari Purman
Maureen Russell
Ken & Carol Schaumburg
Barry & Jeannie Scott
Germanine Wandrey
Hartford City Band

PATRON \$500+

Anonymous
Jerry & Karen Becker
Patrice Burmeister
Clive Frazier

Hartford Masonic Lodge No. 120
H.I.S. Comp. LLC
Kimberly-Clark
Stan & Eunice Indermuehle
John & Christine Kirley
Barbara Klockow
Gary Koppelberger
John & Carol Kuhn
Ron Milner
R.S. Semler & Associates Insurance, Inc.
Darleen M. Schauer
Larry & Barbara Schmidt
Dee Skinner
UCC Foundation of Wisconsin
Lisa Uy Fernandez
Wisconsin Masonic Foundation
David & Rosemarie Wolbrink
Paul Ziegler

ADVOCATE \$250+

Ron & Arlene Brinkmann
Gary Bush
Jeff & Christie Christie
Tim & Mary Dondlinger
Werner & Linda Dorner
Karen Eshman
Leona Friday
Sara Gilman
Leroy & Donna Infalt
Julie Johnson
Gary & Joyce Knoke
Ann & Terry Krueger
Roger & Vicki Krueger
Jan Lindborg
Michelle McGrew
Al & Claudette Moll
Steven & Nancy Niebauer
Lorena Olson
Ron & Jean Schlitt
Margaret Smith
Mr. & Mrs. William Steele
Jane Warzala
Minette Wolf

*Contributions above from July 2024
through June 2025*

THANK YOU TO OUR 2025/26 SEASON SPONSORS

DIAMOND LEVEL

Forte Bank

116 W. Sumner Street, Hartford
262-673-5800

Neil E. Park Family Foundation

Ruth A. Knoll Legacy Fund

West Bend Mutual Insurance Co.

1900 S. 18th Avenue, West Bend
262-334-5571

PLATINUM LEVEL

John & Nancy Lee Family

GOLD LEVEL

Douglas Jeweler

30 N. Main Street, Hartford
262-673-6443

The Lutz Family Foundation

Mantz Automation Inc.

1630 Innovation Way, Hartford
262-673-7560

SILVER LEVEL

Hydro Electronic Devices, Inc. (HED)

2120 Constitution Avenue, Hartford
262-673-9450

Rotary Club of Hartford

WTKM 104.9 FM

27 N. Main Street, Hartford
262-673-7800

BRONZE LEVEL

Bank Five Nine

940 Bell Avenue, Hartford
262-673-0920

Thrivent—Ramiro Paz

810 E. Paradise Drive, West Bend
262-338-7770

EMERALD LEVEL

GFWC Hartford Women's Club

Hartford Electric & Water

620 W. Sumner Street
262-670-3700

Hartford Lions Club

Schnorenberg's Floor Covering, Inc.

15 Mill Street, Hartford
262-673-4020

MEDIA SPONSOR

Conley Media—Daily News & GMToday.com



COURTYARD SPONSORS

Allstate-Zagel Insurance

304 N. Main Street, Hartford
262-673-7975

Brewed Omen

120 N. Main Street, Suite L40, Hartford
262-397-8490

Festival Foods

1275 Bell Avenue, Hartford
262-457-2772

Forte Bank

116 W. Sumner Street, Hartford
262-673-5800

GFWC Hartford Women's Club

Hartford Business Improvement District

Hartford Lions Club

Mantz Automation

1630 Innovation Way, Hartford
262-673-7560

Westside Auto Center

820 W. Sumner Street, Hartford
262-673-2322

Please look for our business and media supporters throughout our materials and thank them with your patronage. **For more information on how to become a sponsor, please call 262-670-0560, x218.**

Come for the view. Stay for the lifestyle.

At Cedar Community, retirement is just the beginning of your next great adventure.

Wake up to birds singing, scenic views, and the peace of the Kettle Moraine—right outside your door. At Cedar Community, this isn't a retreat...it's your everyday life.

Whether you're paddling across Big Cedar Lake at sunrise, crafting in our art studios, enjoying wellness classes, or sharing laughs with neighbors—you'll find endless ways to connect, grow, and thrive.

Discover how Cedar Community can elevate your next chapter!

**Call 262.338.4617
to schedule
your personal
tour today.**



cedarcommunity.org

cedar
community





**Forte Bank proudly
supports the Schauer
Arts Center, where the
arts inspire, connect,
and strengthen our
community.**

► *That's our Forte*

forte
 **bank**



Hartford • Slinger • Richfield • West Bend

**Member
FDIC**